



GLENWOOD COMMUNITY NEWSLETTER

16430 – 97 Ave. 489-7571 November 2013

www.facebook.com / glenwood community

or www.glenwoodcommunityleague.com

Parents of Children under 6!

FREE registered interactive parent and child program “The EMU Program” - open to families with children will be running at Glenwood Community Hall February and March! – This is the giant RV that was at Party in the Park in September. (See poster page 3) Call to Register 780-638-6810



NEW YEAR'S EVE PARTY
Glenwood Community League Hall
16430 97 Ave NW

Cocktails: 6:00 p.m. Dinner: 6:30 p.m. Dance: 8:30 p.m.

Ring in the New Year with family and friends at the Glenwood Community League New Year's Eve Party!
Dance the night away to the music of DJ “The Party Professionals”!
Roast Beef Buffet with all the trimmings by “Catering For You”!
Party Favors! Cash Bar! Late night Lunch!
Only \$45.00 per person!!!

Please contact Dody Lowe at dodyathome@hotmail.com to reserve your tickets now. Space is limited so don't hesitate to get in on the fun!

Glenwood Dates to Remember:

December 1 (weather permitting) Skating rink opens (pg.2)

Tuesday Evenings : Euchre (pg.4)

Wednesday Evenings : Dance Fitness (pg.4)

Friday January 17: Community Youth Club (pg.4)

Public Skating 5 – 9 PM Monday to Friday (pg.2)

Public Skating 12 – 9 PM Saturdays (pg.2)

Public Skating 12 – 6 PM Sundays (pg.2)

Find us
on
Facebook



Grow with us!

Glenwood Grizzlies.....Adult recreational hockey team looking for players !

Players must live in Glenwood and you will need a membership to join

Contact Clayton Johnson 780-489-2188, for more information

Memberships: Michele Bugera 780-439-3169

SKATING RINK OPEN 7 DAYS A WEEK - starting December 1 (weather permitting)!

We are once again looking forward to opening our beautiful Glenwood skating rink 7 days a week! Lace up your skates for a leisurely skate or bring your hockey gear and join in for some shinny hockey! Make sure you bring your skate tags.

FREE with membership, \$2 per skate/person or \$10 Skate Pass (for the season)

Skating Rink Hours –

5 – 9 PM Monday to Friday

12 – 9 PM Saturdays

12 – 6 PM Sundays

Volunteer needed for Sports Director Position:

Responsibilities include: Attend League meetings once per month. Keep contact with and be aware of sports organizations that are available. Be the contact person for Community League members to call when looking to join sports. Work with various sports organizations in placing members or possibly forming teams. Coordinate Community League representatives at registrations when needed.

Call Gary for more information: Phone 489-6236

Learn to Skate Programs : Ages 3-6 years \$45 for a six week program Jan to March

- Call 311;
- On line at <https://ereg.edmonton.ca> ;
- In person At any City of Edmonton Leisure Centre.

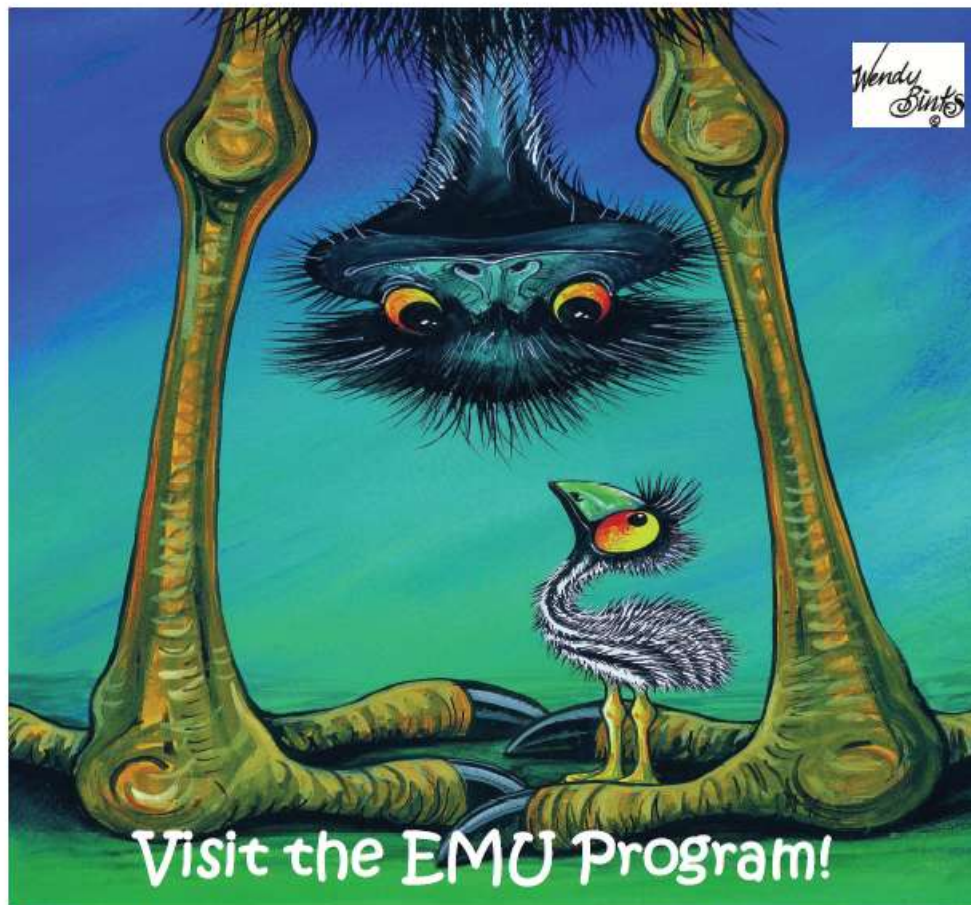
Community Memberships available year round!

Get your \$25 household membership by calling Michele Bugera at 780 439 3169.

Seniors 60+ are Free! Show your membership card and save with...

- Free skating at Glenwood rink and all outdoor community league rinks in Edmonton.
- Discount on Glenwood hall rentals
- FREE community swim Sundays 4 to 6pm at Jasper Place
- Save 10% off City of Edmonton Pools and Leisure Centers multi-passes (5 or more), monthly and annual passes

Memberships are required for preschool registration, and for adult or children's activity (programs, sports, classes) at Glenwood Community including community soccer registration.



Visit the EMU Program!

Where: Glenwood Community League
16430 97 Aveune

When: Wednesday's, February 12, 19, 26 March 5, 12, 19,
and 26 2014

AM 9:30 —11:00

Drop in: 11:15 am—12:15 pm

PM 1:00 —2:30

Our **FREE** and interactive parent and child
program is open to families with children

CALL TO REGISTER 780-638-6810

AM and PM Programs Available



Hall Rental See our website at www.glenwoodcommunityleague.com and go to the Hall rental tab for photos and prices.

NOW OFFERING COMMUNITY PROMOTIONAL SPACE
in the newsletter :
\$50 for business card sized ad, \$100 for double
Delivered to 1100 homes in Glenwood.

Tuesday Night Euchre

Euchre is a "trick-taking" card game played in groups of 4 with partners. Join us for Euchre EVERY Tuesday night at the Glenwood Community Hall.
Games begin at 7 pm.

Wednesday Night Dance Fitness

Every Wednesday - 7 p.m. - 8 p.m.

- No pre-registration necessary
- Drop-in fee: ONLY \$5/person
- Non-traditional Zumba, Upbeat dancing, Aerobics, Fun Music
- Bring a towel, bottle of water, indoor running shoes
- Glenwood Community Hall located at: 16430 - 97 Ave.

And Friday Night:

last Friday evening of the month (with some exceptions):

Community Youth Club

If you are a student (grade 7-12) this is the place for you! Plan to come out to the many amazing Community Youth Club events we have planned for this year for Glenwood.

Community Youth Club is a program led by Andrew Haws, a seasoned youth worker who also works full-time as the Youth Pastor at West Meadows Baptist Church and volunteers regularly at Westlawn J.H.

Our next event is January 17th which will be called M&M night. It will be a night dedicated to playing games involving M&M candies. and again will be at the community league building from 7-10pm. Everyone is asked to bring a bag of M&Ms!

For more information or any questions please contact Andrew Haws email andrew@westmeadows.org or Cell 780-909-873.

League Executive 2013-2014

PRESIDENT	Gary Racich (780 489-6236)
VICE PRESIDENT	Clayton Johnson
SECRETARY	Janet McKinney
TREASURER	Harriet Fortuin
MEMBERSHIP DIRECTOR	Michele Bugera
FACILITY DIRECTOR	Charlotte Larsen
CITY LIAISON DIRECTOR	Jamie Post
PROGRAM DIRECTOR	Shelley Blacklock
SPORTS DIRECTOR	VACANT (see p. 2)
NEWSLETTER DIRECTOR	Beth Kent

Phone: 780-489-7571

www.glenwoodcommunityleague.com
www.facebook.com/glenwoodcommunity

Find us
on
Facebook

