



GLENWOOD COMMUNITY NEWSLETTER

16430 – 97 Ave. 489-7571 December 2013

[www.facebook.com / glenwood community](http://www.facebook.com/glenwoodcommunity)

or www.glenwoodcommunityleague.com

By E-Mail only, No Paper Distribution



NEW YEAR'S EVE PARTY
Glenwood Community League Hall
16430 97 Ave NW

Cocktails: 6:00 p.m. Dinner: 6:30 p.m. Dance: 8:30 p.m.

Ring in the New Year with family and friends at the Glenwood Community League!

Dance the night away to the music of DJ "The Party Professionals"!

Roast Beef Buffet with all the trimmings by "Catering For You"!

Party Favors! Cash Bar! Late night Lunch!

Only \$45.00 per person!!!

Please contact Dody Lowe at dodyathome@hotmail.com or phone (780) 964-1340 to reserve your tickets now.
Space is limited so don't hesitate to get in on the fun!

*Interested in Bartending at the New Year's Eve party?
Give Dody a call at (780) 964-1340.*

Glenwood Dates to Remember:

Dec 30 to Jan 3 Snow Shack (pg. 3)

December 31: New Year's Party!

Tuesday Evenings : Euchre (pg.4)

Wednesday Evenings : Dance Fitness (pg.4)

Friday January 17: Community Youth Club (pg.4)

Public Skating 5 – 9 PM Monday to Friday (pg.4)

Public Skating 12 – 9 PM Saturdays (pg.4)

Public Skating 12 – 6 PM Sundays (pg.4)

Mondays Jan 20 to March 17 - Grief Journeys (pg.4)

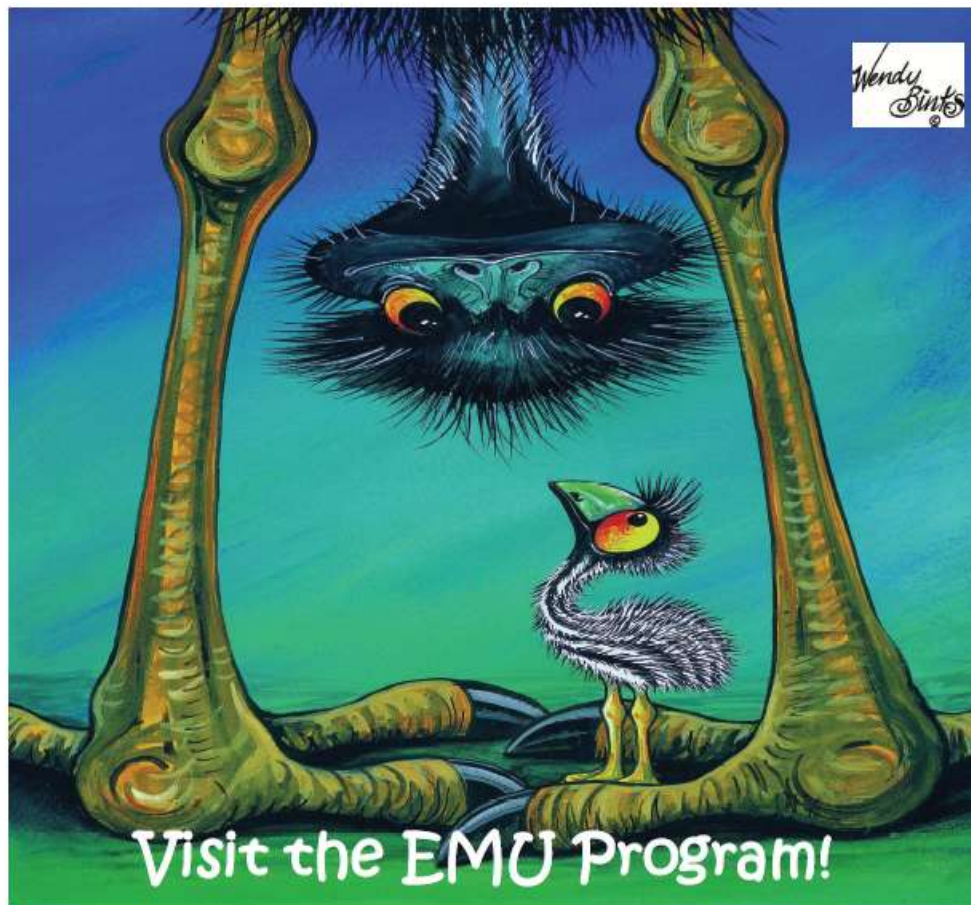
Wednesdays Feb 12 to March 26 - EMU program (pg. 2)

Find us
on
Facebook



Grow with us!





Visit the EMU Program!

Where: Glenwood Community League
16430 97 Avenue

When: Wednesday's, February 12, 19, 26 March 5, 12, 19,
and 26 2014

AM 9:30 —11:00

Drop in: 11:15 am—12:15 pm

PM 1:00 —2:30

Our **FREE** and interactive parent and child
program is open to families with children

CALL TO REGISTER 780-638-6810

AM and PM Programs Available



EDMONTON

Snow Shack

@Meadowlark Community
Playground
15961 – 92 Ave

Come drop in
for this free
and fun event!

Come join us for a winter version of our summer green shack program. This **free**, drop in program lets children come and go during the day and participate in a variety of games, crafts and activities, including snow shoeing, snow fort building, and snow painting!

Details:

Dates: Mon – Fri, December 30 – January 3 -
No session January 1

Time: 12:00 – 4:00 pm

Ages: 6-12 *

Cost: Free!

* Please note that children under the age of 6 are welcome, but must be accompanied by an adult.



THE CITY OF
Edmonton

Learn to Skate Programs

For AGES 3 -10

at nearby community leagues:

West Meadowlark Community League 9311-165 St
Britannia Youngstown Community League 15927 – 105 Ave
West Jasper/Sherwood Community League 9606 – 153 St

See attached posters for times and registration information. Or call 311.

Tuesday Night Euchre

Euchre is a "trick-taking" card game played in groups of 4 with partners. Join us for Euchre EVERY Tuesday night at the Glenwood Community Hall.

Games begin at 7 pm.

Wednesday Night Dance Fitness

Every Wednesday - 7 p.m. – 8 p.m.

- No pre-registration necessary
- Drop-in fee: **ONLY** \$5/person
- Non-traditional Zumba, Upbeat dancing, Aerobics, Fun Music
- Bring a towel, bottle of water, indoor running shoes
- Glenwood Community Hall located at:
16430 – 97 Ave.

Grief Journeys - 8 week adult support group

"Help, support, and resources as we journey together"

Monday Evenings 6:30 – 8:30 PM
January 20 – March 17, 2014

PILGRIMS HOSPICE 9808 148 Street

Call to Register: 780-413-9801 ext. 307

Community Youth Club -

For students grade 7-12.

Our next event is January 17th which will be called M&M night, will be at the community league building from 7-10pm. Everyone is asked to bring a bag of M&Ms!

For more information or any questions please contact Andrew Haws andrew@westmeadows.org or 780-909-873.

SKATING 7 DAYS A WEEK

Lace up your skates for a leisurely skate or bring your hockey gear and join in for some shinny hockey! Make sure you bring your skate tags.

FREE with membership, \$2 per skate/person or \$10 Skate Pass (for the season)

Skating Rink Hours –

5 – 9 PM Monday to Friday

12 – 9 PM Saturdays

12 – 6 PM Sundays

NOW OFFERING COMMUNITY PROMOTIONAL SPACE in the newsletter :

\$50 for business card sized ad, \$100 for double

Delivered to 1100 homes in Glenwood.

Hall Rental See our website and go to the Hall rental tab for photos and prices.

Phone: 780-489-7571

www.glenwoodcommunityleague.com

www.facebook.com/glenwoodcommunity

Find us
on
Facebook

